

DEAR GUESTS

The Labin area is working intensively and responsibly on preserving the environment so that we can all enjoy the benefits of a clean and healthy environment.

The purpose of the "Zelene navike" (Green Habits) project is to build and raise awareness of citizens and guests of Labin and municipalities of Labin area about the importance of responsible municipal waste handling, waste prevention, proper household waste separation, household composting, and reusing objects in order to reduce the amount of waste disposed at landfills.

The symbolism of number 21 in our information campaign is multiple. It is reminder of Millennium Declaration (Agenda 21), a political document of the United Nations for the 21st century. Recycling of waste is a vital part of Agenda 21 and is a very important step in the battle against environmental pollution and resource preservation.

Don't forget that you need a minimum of 21 days to adopt a new habit – and we ask you to pursue waste separation because it will become a GREEN HABIT that contributes to environmental protection!

CONTACT US!



Phone number for citizens:

052/855-375

from Monday to Friday
from 07:00 to 15:00



Addresses of important locations:

Management:

Vinež 81, 52220 Labin

Recycling yards:

Labin, Pulska bb

Raša, Ulica Nikole Tesle



The developer of the "Zelene navike za održivu Labinštinu" (Green Habits for a Sustainable Labin Area) is the City of Labin in cooperation with municipalities Raša, Sv. Nedelja, Kršan and Pićan. The total value of the project amounts to HRK 583,808.54, HRK 496,237.25 being granted from the Cohesion Fund, whereas HRK 52,542.77 coming from the Ministry of Regional Development and EU Funds' Fund for co-financing the implementation of EU projects at regional and local level for 2018.

City of Labin

Titov trg 11

52220 Labin

Contact person:

Robert Mohorović, mag.oec.

Senior Associate for international projects

Administrative Department for Economy
and EU Projects

+385 (0) 52 866-817

robert.mohorovic@labin.hr

www.labin.hr



www.zelene-navike.hr

www.strukturnifondovi.hr

The content of the flyer is the sole
responsibility of the City of Labin



Zelene navike
za održivu Labinštinu



This project has
been co-financed by
the European Union
from the
Cohesion Fund



USED CLOTHES AND FOOTWEAR

Recycling of clothes, footwear and other textile is easier and more accessible because the Social cooperative Humana Nova Istra that employs people with disabilities operates in the Labin area. The cooperative collects textile with the help of containers which have been placed throughout the city of Labin and all municipalities.

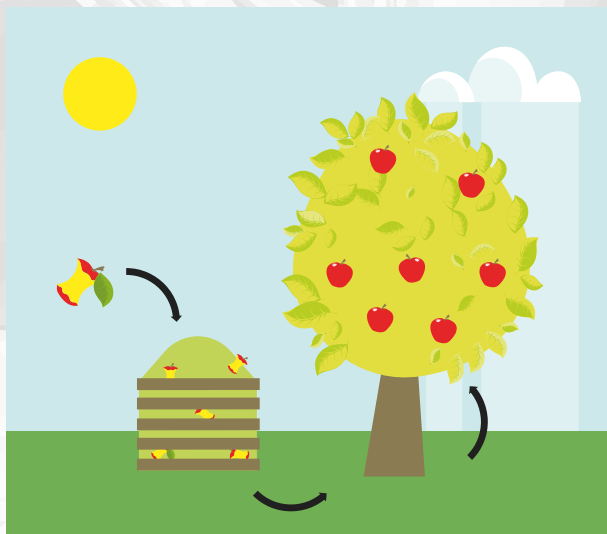


In addition, large amounts of clothes and footwear can be donated to their sorting facility at Rudarska 3 ("pijatal", reg. town square).

HumanaNOVA

COMPOST

You can compost all vegetal waste from the kitchen, garden, orchard and lawn. We will obtain quality compost if we thoroughly mix together as many different composting materials as possible.



WHAT TO DO WITH DIFFERENT TYPES OF WASTE?



MIXED WASTE

In the green waste container we dispose of only those types of waste that cannot be recycled. The goal of each citizen is have this container on a diet.



PLASTIC AND CANS COLLECTING:

plastic cups and plates (without food remains), bags, drinks and beverage bottles, plastic packaging boxes of food products, plastic packaging of other products, plastic caps, other items made of plastic, beverage cans (aluminum) cans of foodstuffs (iron), small metal articles of metal plugs, aluminum foil



PAPER

COLLECTABLE:

paper plates and cups unless they contain food remains cardboard and paper packaging office paper, newspapers and magazines, notebooks and books, boxes

NOT COLLECTABLE:

dirty and greasy paper and cardboard, greaseproof paper, plastic-coated paper, photos



GLASS

Dispose of glass material into the glass container.

All drinks and beverage packaging larger than 0.2 litres with a deposit symbol can be handed in at a store and you can get a refund in the amount of HRK 0.50 per bottle.

RECYCLING YARD



What can citizens put away in our recycling yard?

CARDBOARD

only neatly folded cardboard packaging (e.g. little boxes and boxes)

GLASS

bottles and jars in general, clear glass separated from plastic and metal cover

METAL

iron in general, cookers, metal nets, bicycles, tubes, pipes

DURABLE GOODS

washing machines, refrigerators, freezers, televisions, monitors, computers, printers, domestic electronic devices of various dimensions

WOOD

furniture in general, logs, wooden boxes, planks, particle boards, etc.

BOUGHS

boughs, vegetable peel waste, grass swath, etc.

INERT WASTE

demolition waste, household ceramic, terracotta, porcelain waste

BULKY

waste that cannot be disposed of because it does not fit into the green container due to size, such as mattresses, sofas, armchairs

SOFT PLASTIC PACKAGING

cellophane, nylon, Styrofoam packaging, bandages, carrier

and other plastic bags
HARD PLASTIC PACKAGING
bottles, trays and boxes
TYRES

car, motorcycle, moped, and bicycle tyres
BOXES LABELLED TOXIC OR FLAMMABLE

cans of paint, sprays, domestic glue, pesticide, domestic anticorrosive packaging

NEON

broken lamps and spent neon bulbs

ACCUMULATOR BATTERIES

car and motor batteries

VEGETABLE OIL

oil for frying and preparing food (e.g. supplies of oil products)

MINERAL OILS

car oils

BATTERIES

lamp batteries, small wristwatch batteries, rectangular batteries, mobile phone batteries...

CONSUMED MEDICATION

Ampoules for injection, disinfectants, syrup, ointment, tablets (without the cardboard box)

TONER

toner for printers